



Presented By

# LIGHTEN

## L I F T

Satisfaction in every ride



Mangalbari, Malda 732142



+91 9339-2020-44



support@lightenlift.com



www.lightenlift.com

# About us



Kanirmore, Malda, 732102

[www.lightenlift.com](http://www.lightenlift.com)

[support@lightenlift.com](mailto:support@lightenlift.com)

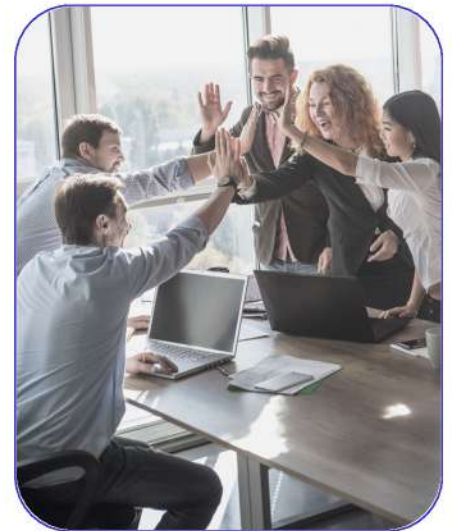
@lightenlift    

## Introduction

At **Lighten Lift**, we elevate more than just people; we lift experiences, opportunities, and aspirations. As a leading innovator in the vertical transportation industry, we take pride in seamlessly connecting spaces and enhancing the way people move, work, and live.

## Our Story

Established on the foundation of unwavering commitment and technical prowess, Lighten Lift has emerged as a beacon of reliability and innovation in the lift industry. Our journey began with a vision to redefine vertical transportation through cutting-edge technology, exceptional craftsmanship, and a relentless pursuit of customer satisfaction.



## Vision

We envision a world where vertical transportation is not just a convenience but a seamless part of everyday life, where our lifts not only transcend physical barriers but elevate human experiences, enabling individuals and communities to reach new heights effortlessly.

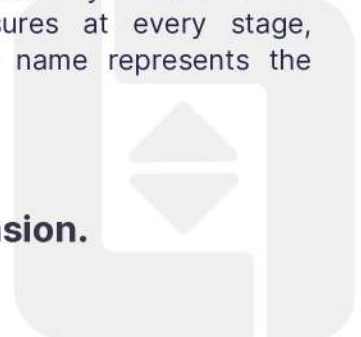
## Mission

Our mission at Lighten Lift is simple yet profound - to elevate life's moments by providing safe, efficient, and state-of-the-art vertical mobility solutions. We strive to transcend mere functionality, offering a blend of aesthetics, performance, and sustainability in every lift we create.

## Commitment to Excellence

At Lighten Lift, excellence is our hallmark. We consistently push the boundaries of innovation, employing advanced engineering and design to deliver lifts that exceed industry standards. We uphold stringent quality control measures at every stage, ensuring each product that bears our name represents the pinnacle of reliability and performance.

**Elevate with Lighten Lift –  
Where Innovation Meets Ascension.**







# LIGHTEN LIFT

Satisfaction in every ride

## Type of Lift



### MINI MACHINE ROOM (MMR)

Type : Geared Motor  
Room : Required  
Encoder : Optional  
Roping : 1:1  
Overhead : 4800 mm  
Voltage : 440v

### MACHINE ROOM LESS (MRL)

Type : Gearless Motor  
Room : Not Required  
Encoder : Mandatory  
Roping : 2:1  
Overhead : 4500 mm  
Voltage : 220v / 440v





**LIGHTEN LIFT**  
Satisfaction in every ride

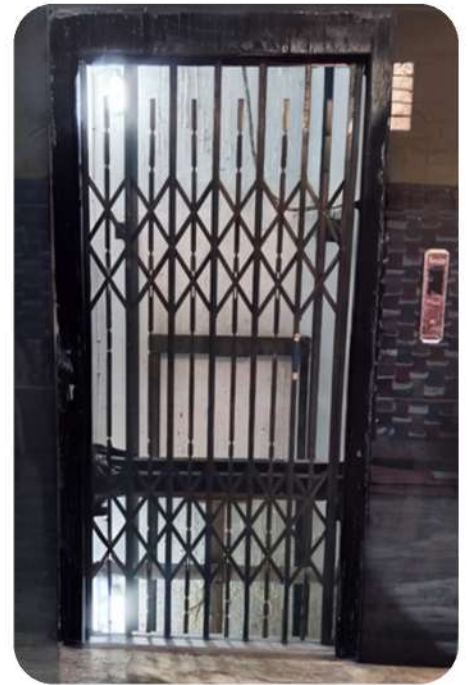
## Type of Doors



**SWING DOOR**



**SWING DOOR**



**COLLAPSIBLE DOOR**



**IFD DOOR**



**SS TELESCOPIC DOOR**



**SS TELESCOPIC DOOR**





# LIGHTEN LIFT

Satisfaction in every ride

## Type of Doors



**SS CENTER OPENING**



**SS CENTER OPENING**



**SS CENTER OPENING**



**HALF VISION GLASS**



**FULL VISION GLASS**



**FULL VISION GLASS**



**LIGHTEN LIFT**  
Satisfaction in every ride

**Cabin Design**



**NSS01**



**GSS02**



**HSS03**



**DSM04**



**BSM05**



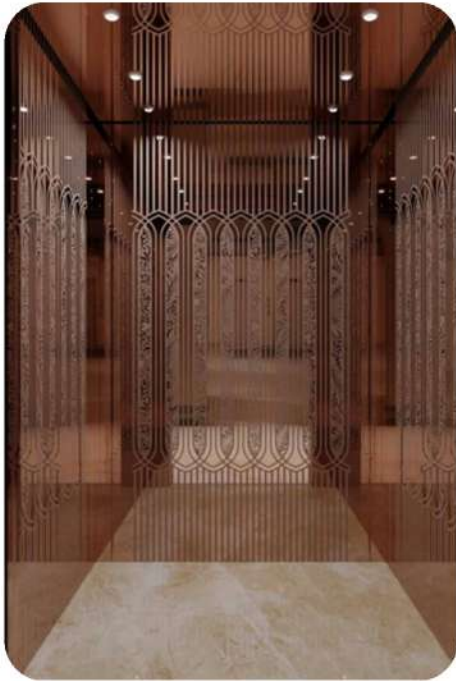
**RGB06**





**LIGHTEN LIFT**  
Satisfaction in every ride

**Cabin Design**



**DRG07**



**DGM08**



**RGM09**



**DSW10**



**DFW11**



**DTS12**





# LIGHTEN LIFT

Satisfaction in every ride

Premium  
Designing Sheet







**LIGHTEN LIFT**

Satisfaction in every ride

**Floor Design**



**RUBBER MAT**



**ALUMINUM CHECKER**



**VINYL**



**VINYL**



**EPOXY**



**EPOXY**



**MAT**



**MAT**



# LIGHTEN LIFT

Satisfaction in every ride

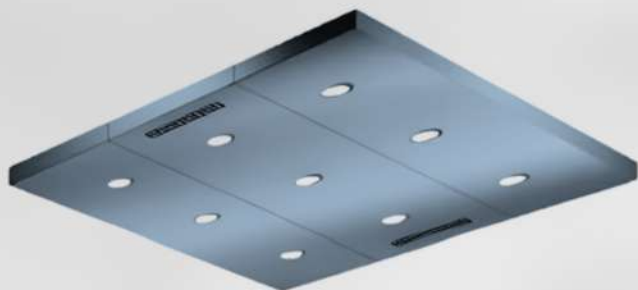
## Celling & Handrail Design



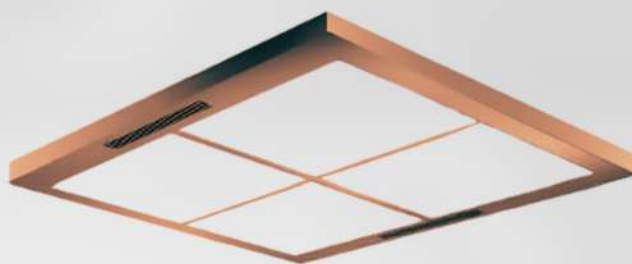
Height 100 mm || Gold Painted Steel  
& Acrylic Panel || Direct Ventilation



Height 100 mm || Silver Gray Painted Steel &  
Acrylic Panel || Direct Ventilation



Height 100 mm || Silver Painted Steel  
& Acrylic Panel || Direct Ventilation



Height 100 mm || Rose Gold Painted Steel  
& Acrylic Panel || Direct Ventilation

---

## HANDRAIL



SS SILVER ROUND



SS SILVER FLAT



SS GOLD ROUND





# LIGHTEN LIFT

Satisfaction in every ride

## LOP & COP



**SS PUSH BUTTON**



**ACRYLIC SEMI TOUCH**



**ACRYLIC SEMI TOUCH**



**ACRYLIC FULL TOUCH  
WITH FINGERPRINT**



**ACRYLIC PUSH BUTTON  
WITH RF & PIN AUTH**



**ACRYLIC FULL TOUCH  
WITH RF ID**



# LIGHTEN LIFT

Satisfaction in every ride

## Motor Specification

### MONTANARI (GEARED)

Static load: **2,200 kg**  
Capacity: **408 kg (1:1)**  
Oil capacity: **1.7 L**  
Motors: **50 Hz**  
VVVF 4 poles: **4 KW**



### MONTANARI (GEARLESS)

Static load: **1,800 kg**  
Capacity: **408 kg (2:1)**  
Oil capacity: **-**  
Motors: **50 Hz**  
VVVF 4 poles: **2.8 KW**

### SHARP (Geared)

Static load: **3,000 kg**  
Capacity: **408 kg (1:1)**  
Oil capacity: **2.0 L**  
Motors: **50 Hz**  
VVVF 4 poles: **3.7 KW**



### SHARP (Gearless)

Static load: **1,800 kg**  
Capacity: **408 kg (2:1)**  
Oil capacity: **-**  
Motors: **50 Hz**  
VVVF 4 poles: **4 KW**





# LIGHTEN LIFT

Satisfaction in every ride

## Motor Specification

### Tectronics (Gearless)

Static load: **2,500 kg**  
Capacity: **408 kg (2:1)**  
Oil capacity: **-**  
Motors: **50 Hz**  
VVVF 4 poles: **2.2 KW**



### SHARP (Gearless)

Static load: **2,000 kg**  
Capacity: **408 kg (2:1)**  
Oil capacity: **-**  
Motors: **50 Hz**  
VVVF 4 poles: **2.5 KW**

### SHARP (Geared)

Static load: **5,000 kg**  
Capacity: **2000 kg (2:1)**  
Oil capacity: **4.5 L**  
Motors: **50 Hz**  
VVVF 4 poles: **9 KW**



### MONTANARI (Geared)

Static load: **5,000 kg**  
Capacity: **2500 kg (2:1)**  
Oil capacity: **5.0 L**  
Motors: **50 Hz**  
VVVF 4 poles: **11 KW**



# LIGHTEN LIFT

Satisfaction in every ride

## CONTROL SYSTEM



**OPEN LOOP GEARED**



**CLOSE LOOP GEARLESS**



**INOVANCE VVVF DRIVE**

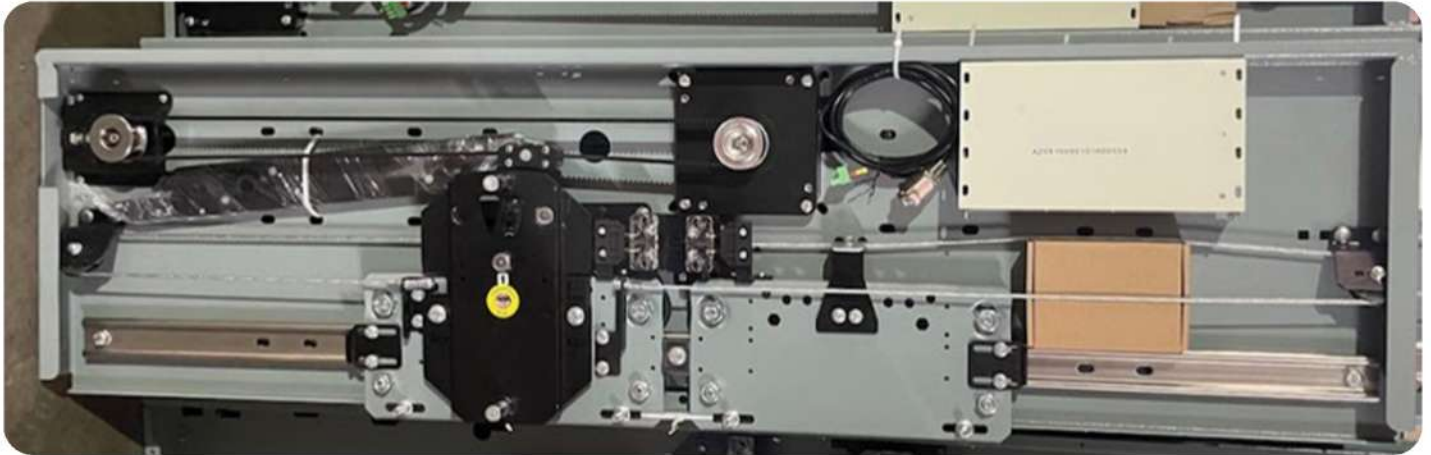


**INVT VVVF DRIVE**

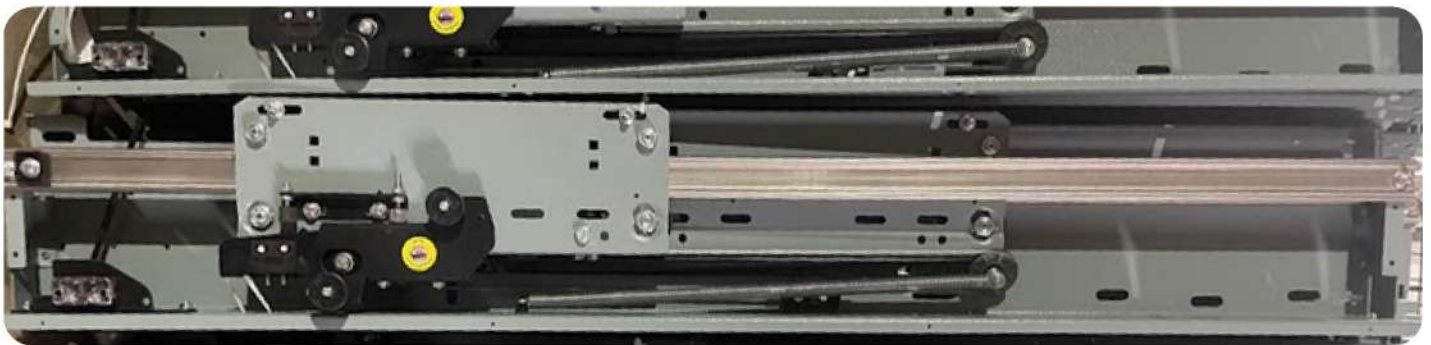


**AUTO RESCUE DEVICE**

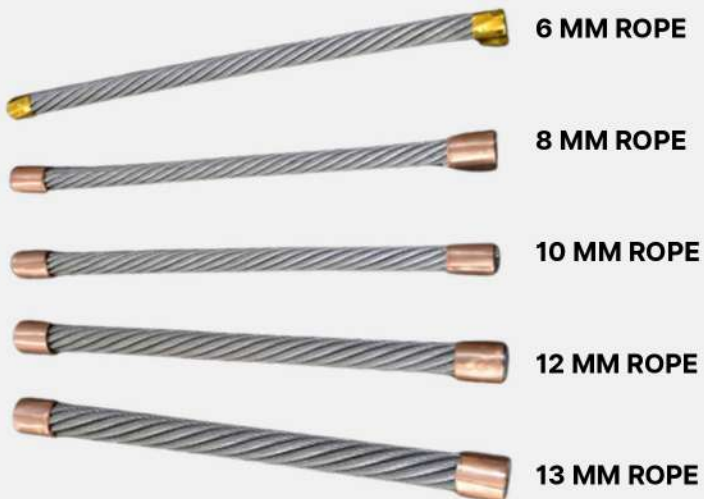




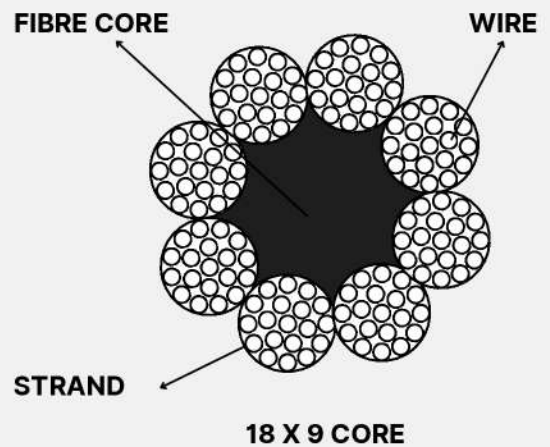
**CAR GATE HEADER**



**LANDING GATE HEADER**



**USHA-MARTIN ROPE**



**13 MM ROPE**



**LIGHTEN LIFT**  
Satisfaction in every ride

**OTHERS  
COMPONENTS**



**GUIDE RAIL**



**DOOR SENSOR**



**DOOR DRIVE**



**OVERLOAD SYSTEM**

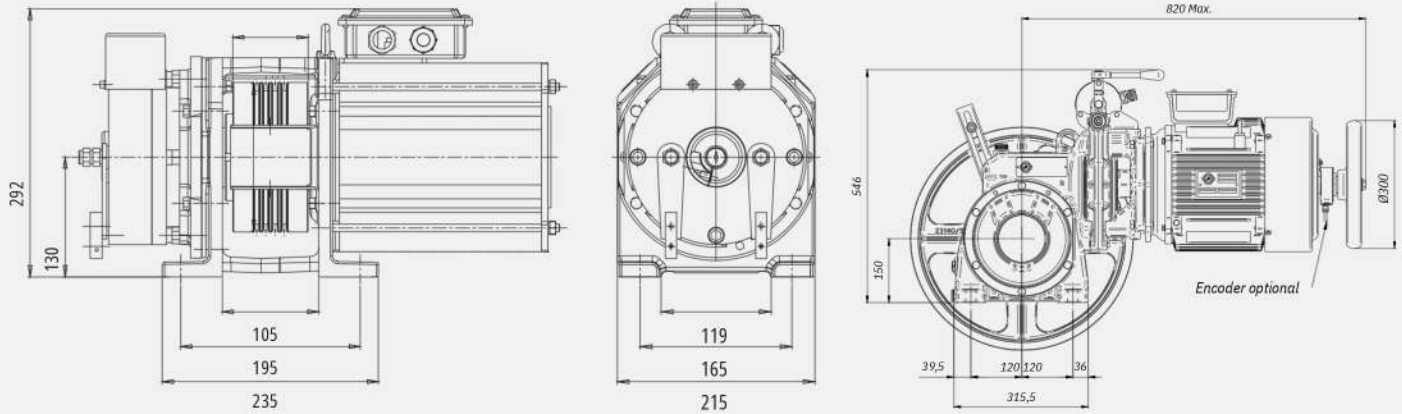


**FIREMANS SWITCH**



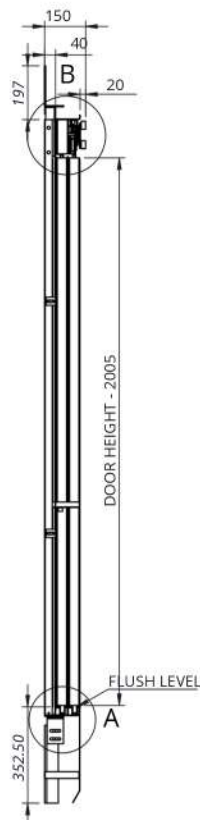
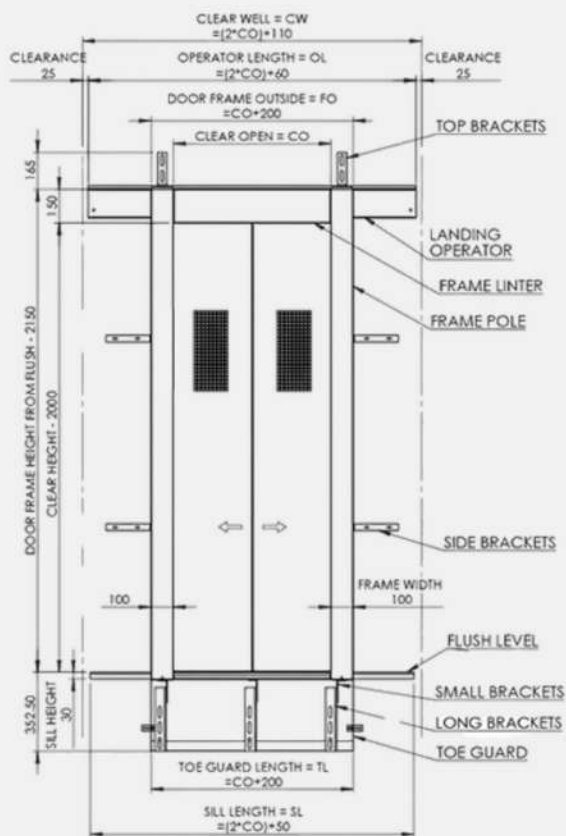
**INTERCOM SYSTEM**



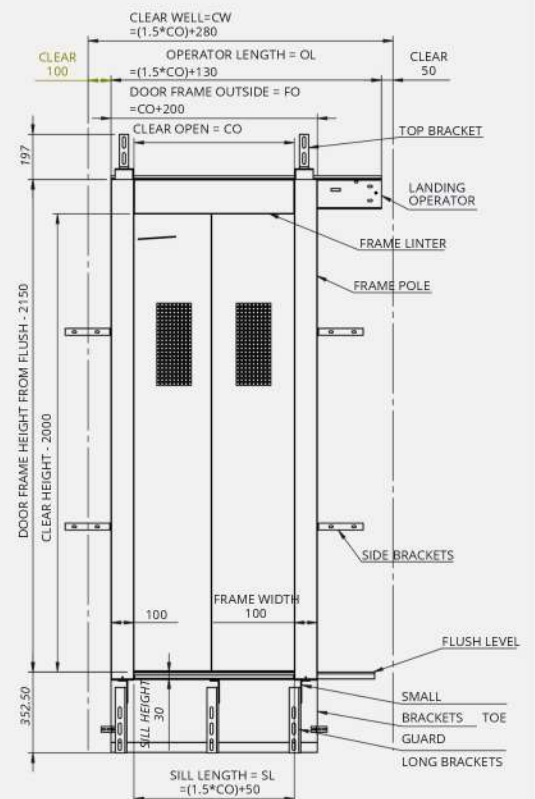


### MOTOR TECHNICAL DRAWING

### AUTO CENTRE OPENING DOOR



### AUTO TELESCOPIC DOOR





**LIGHTEN LIFT**  
Satisfaction in every ride

**ASSOCIATED  
BRANDS**

### All Products are



### Motor



*Montanari Group*  
GEARLESS&GEARBOX  
TRACTION MACHINES



**SHARP**<sup>TM</sup>  
**ENGINEERS**

### Controller



**ARKEL**

### Elevator Kit



**AARON**<sup>TM</sup>  
**INDUSTRIES LTD**



**SHIVSHAKTI**<sup>TM</sup>  
ELEVATOR COMPONENTS PVT LT

### Other Components



**invvt**



**usha martin**<sup>®</sup>





# LIGHTEN LIFT

Satisfaction in every ride

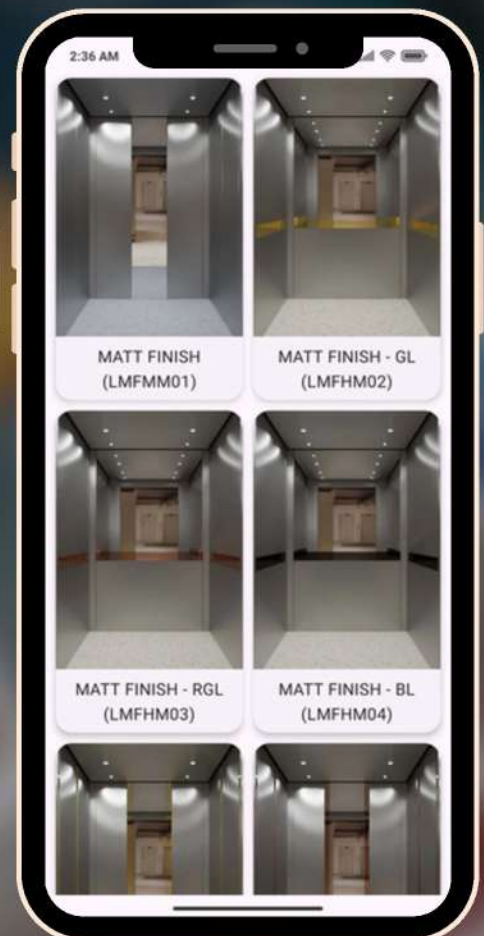
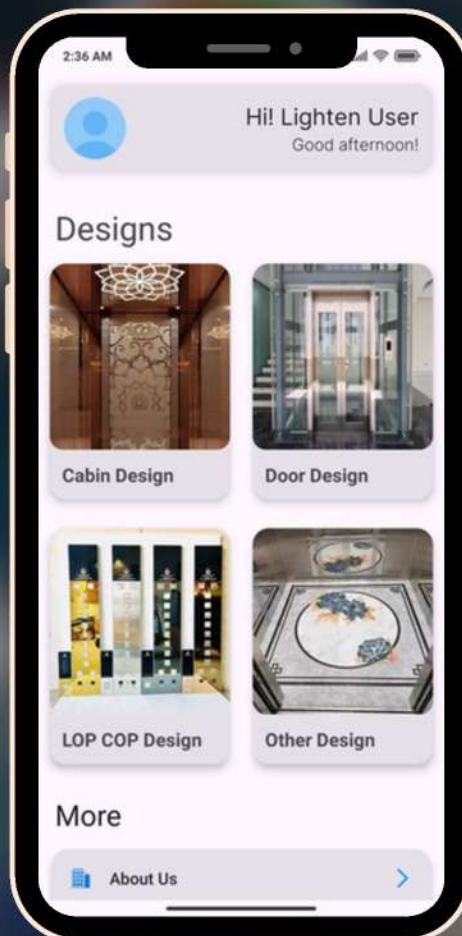
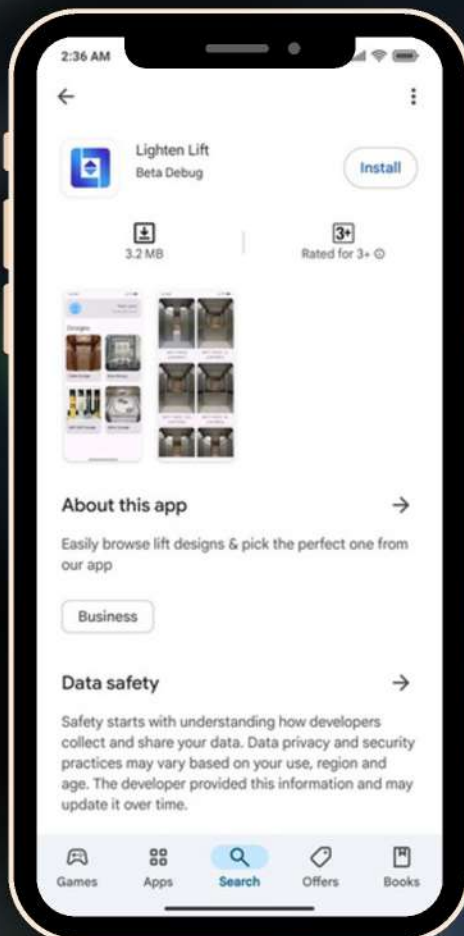
Download App

## EXPLORE LATEST DESIGN

Download our android app



GET IT ON  
**Google Play**



For more visit our website : [www.lightenlift.com](http://www.lightenlift.com)



**THANK YOU**

## Contact us

+91 9339-2020-44 

Mangalbari, Malda 732102 

support@lightenlift.com 

www.lightenlift.com 



**Follow us on**

